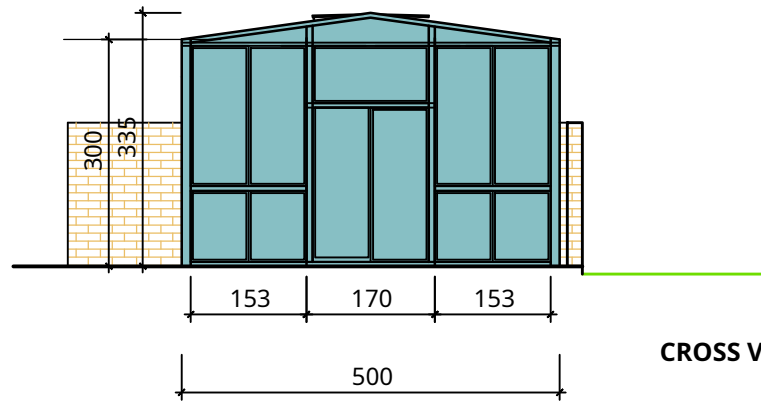
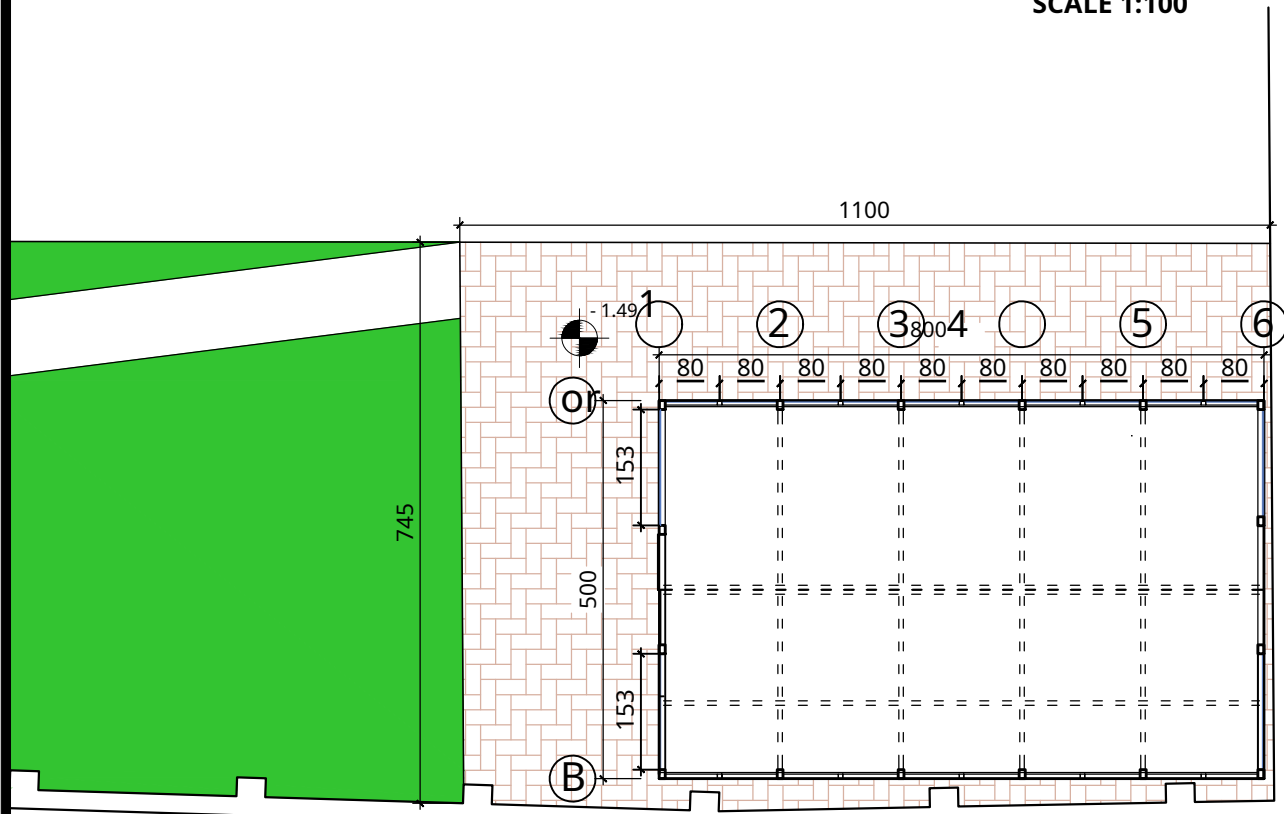
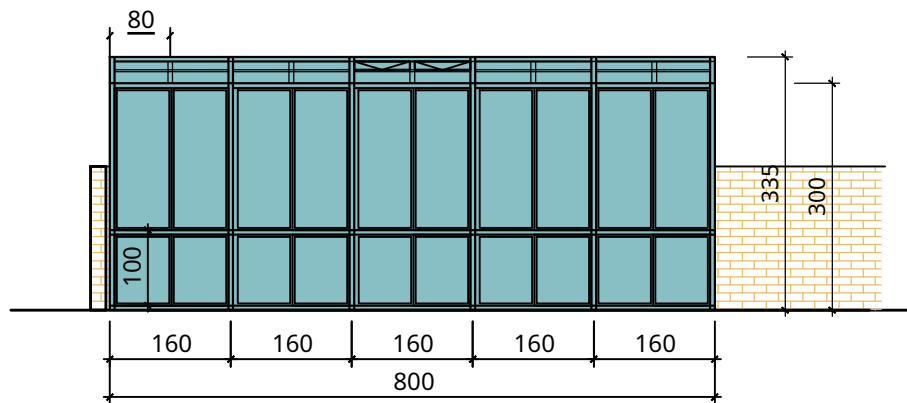


PLAN OF THE GREENHOUSE ON THE SOUTH SIDE OF THE 4-STORY BUILDING

SCALE 1:100

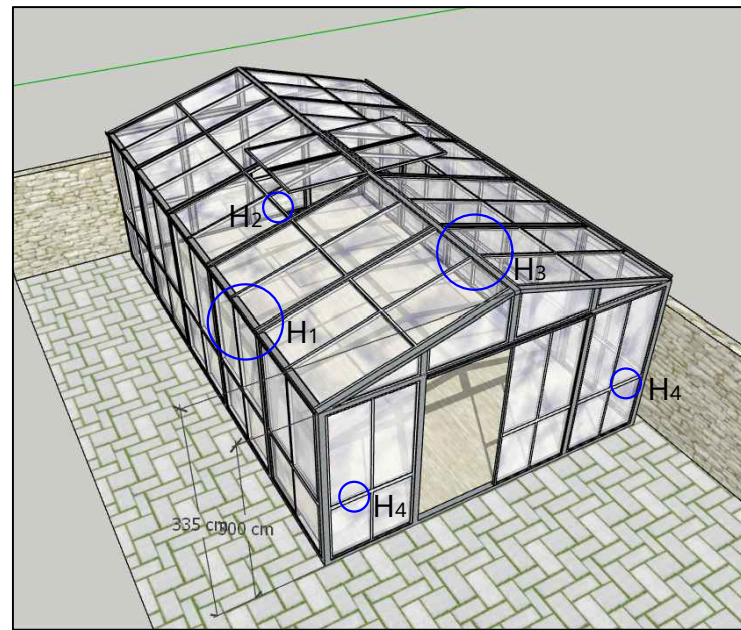


CROSS VIEW OF THE GREENHOUSE

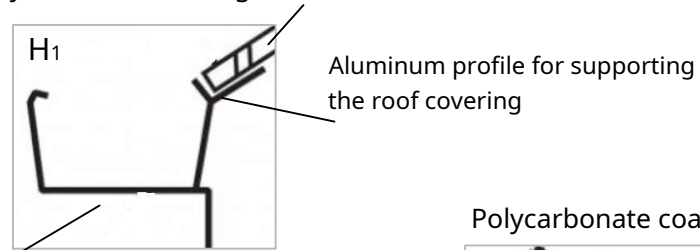


LONGITUDINAL VIEW OF THE GREENHOUSE

3D VIEW OF THE GREENHOUSE

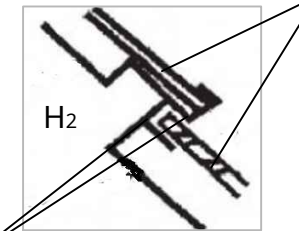


Polycarbonate coating

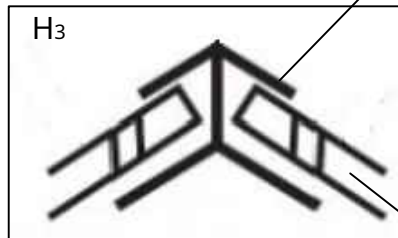


Gutter for draining water

Polycarbonate coating



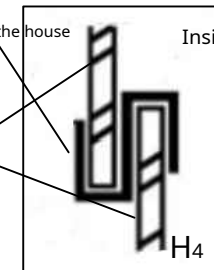
Aluminum profile for supporting the roof covering



Out of the house Inside the house



Polycarbonate coating



TECHNICAL NOTES

- FOR THE CONSTRUCTION OF THE GREENHOUSE, YOU REFER TO THE CONSTRUCTION SHEETS
- BEFORE STARTING THE WORKS, THE DIMENSIONS MUST BE VERIFIED ON SITE.
- THE COATING OF THE GREENHOUSE WILL BE MADE WITH POLYCARBONATE WITH A THICKNESS OF 4mm, PLACED IN ALUMINUM PROFILE WITH PERCINA

commissioning
UNIVERSITY HOSPITAL CENTER
"MOTHER TERESA"

projected
POLYTECHNIC UNIVERSITY OF TIRANA



actioN
 RECONSTRUCTION OF THE BUILDINGS OF THE PSYCHIATRIC HOSPITAL IN
"MOTHER TERESA" UNIVERSITY HOSPITAL CENTER, TIRANA

TITLE OF THE SHEET	CUTTING AND PLAN DETAIL OF SYSTEMATION- GREENHOUSE (SOUTH SIDE)	A- 09/1
--------------------	---	---------

actioN	DESIGN GROUP	signature	endnoteS
actioN ARCHITECTURAL	Ark. Pre-order NOW		
	Ark.		
	Ark.		
actioN STRUCTURAL	Eng. Dimitar PAPA		
	Eng. Anjeza GENDER		
	Eng.		
actioN ELECTRIC, LAN	Eng. DHAMO was born		
	Eng. Ilir SHINKO		
actioN MECHANICAL	Eng. Artan HOXHA		
	Eng. Erald PIPERI		
	Eng.		
actioN HYDRO SANITARY, MNZ	Eng. Ildir LAMI		
	Eng. PROFKA light		
	Eng.		
THE SERVICE TOPOGRAPHICAL	Eng. Fever BEJKO		
EIA	Eng. Oltion MARCO		
	Eng.		
	Eng.		
EFFICIENCY power	Eng. Artan HOXHA		
	Eng. Erald PIPERI		
	Eng.		

DATE July 2020	STAIRS 1:500	IMPLEMENTATION PROJECT
-------------------	-----------------	------------------------